

instant
empathist

feel | imagine | do | share

dirty bathrooms

inclusion

bullying



select a
cause

traffic

poverty

preserving
culture

loneliness

old age home

garbage

Where is it
most common

Have I **personally**
experienced this

Do I know **someone**
affected by this



Why does it matter

360 view

What **surprises** you
about this

Why is this cause
important

parts
make a whole



No respect for policemen

dig deeper

Observe



Who is being **affected**?

- *All police personnel*

What do I **see, hear** and **feel**?

- *All police personnel stand and work in the heat*
- *Lots of honking of cars*
- *Pollution!*

Where does it happen?

- *Traffic junctions*

When does it happen?

- *Through the day/ rush hour more*

No respect
for policemen

dig
deeper

Engage



Facts

- Age / years of service
- Personal details (family, education)
- Working hours
- salary

Stories

What do you :
see / feel / hear

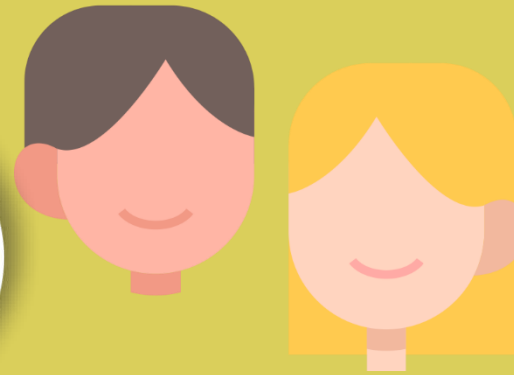
Key experiences

When was it a good day / bad
day and why

Best Case Scenario

What do you want to see changed?

**"POLICEMEN ARE
VALUED MEMBERS
OF SOCIETY"**



brainstorm

think about various solutions!
all ideas matter!!

can your idea be
easy to replicate

can you think of a bold idea

can you think of a
long lasting idea

MAKE A REALISTIC TIMELINE

AND STICK TO IT!



What materials can be used?

What is the...

- location
- audience

THINGS TO CONSIDER

Impact on user

at every step, keep in mind:
documentation

do



WHO WILL DO WHAT



Put your ideas into **ACTION!**

PREPARE THE
BUDGET

CHANGES THE BEING



share

- What was most difficult
- What surprised you
- What will you take with you
- How will you be the change!

BEING THE CHANGE